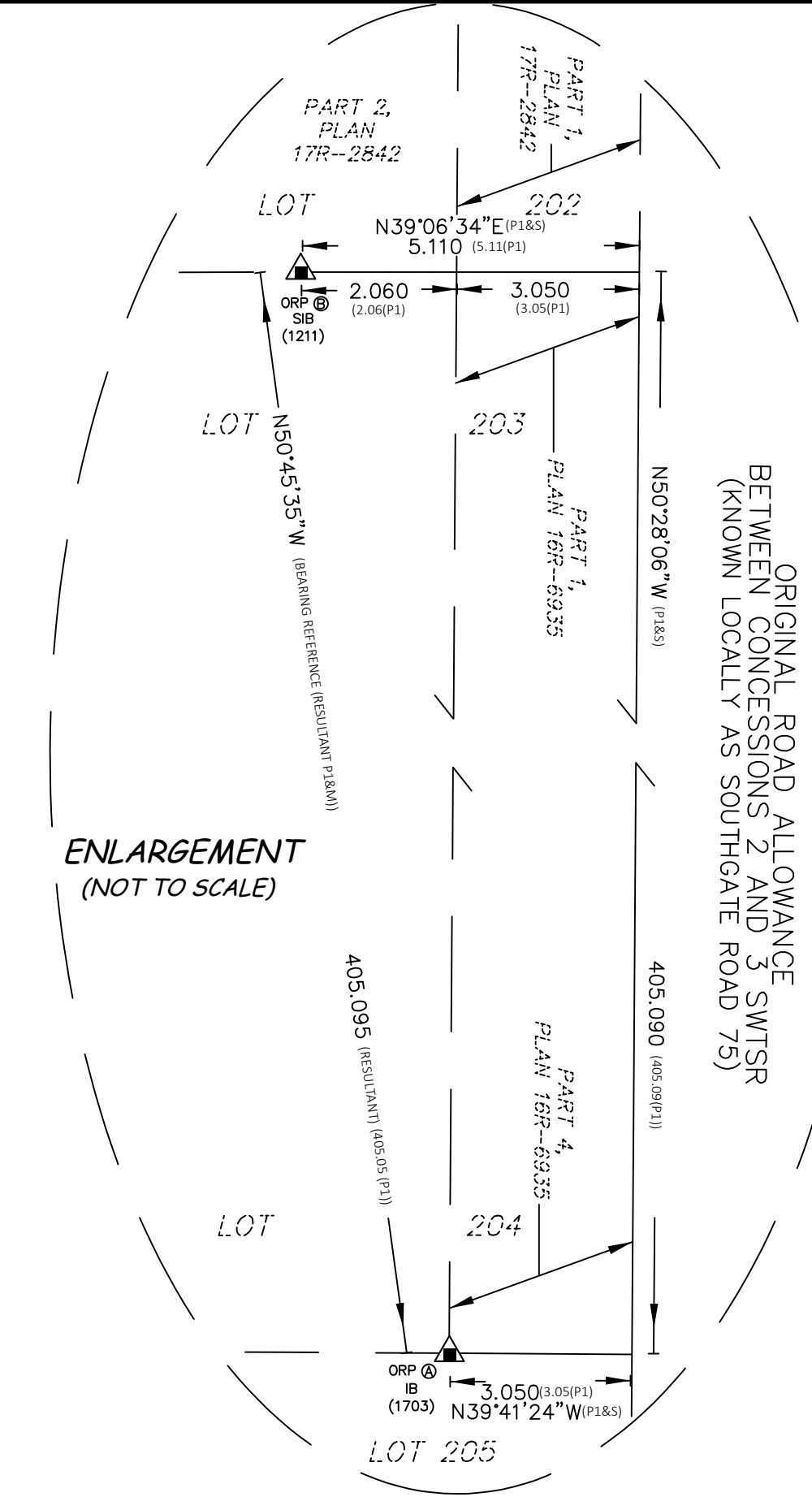
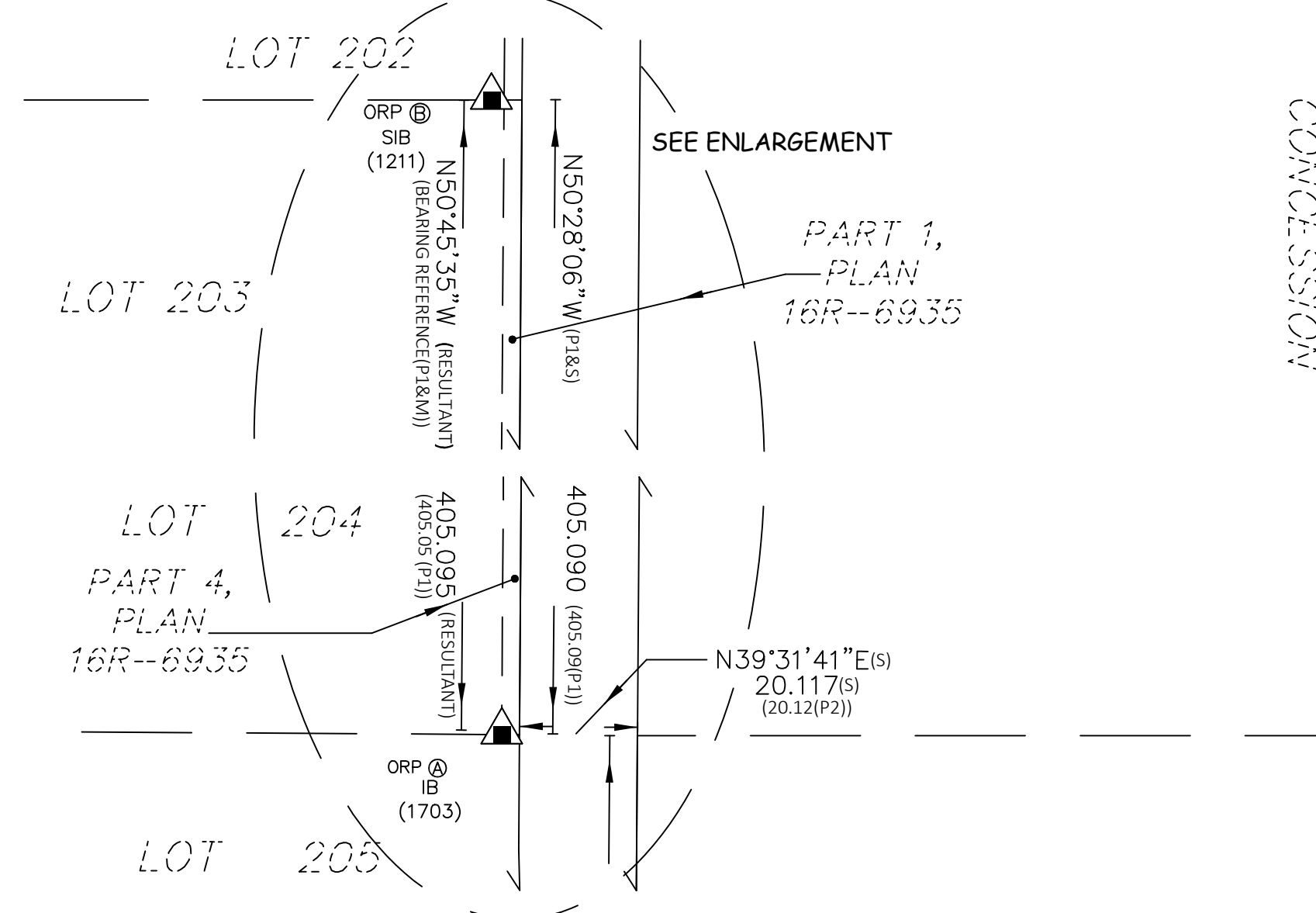


PLAN OF SURVEY OF
PART OF LOT 205 & 206, CONCESSION 2 SWTSR
 (GEOGRAPHIC TOWNSHIP OF PROTON)
 TOWNSHIP OF SOUTHGATE
 COUNTY OF GREY
 Scale 1:1000
 THE INTENDED PLOT SIZE OF THE PLAN IS IN 132.1cm WIDTH BY 60.9cm IN HEIGHT WHEN PLOTTED AT A SCALE OF 1:1000
WILSON-FORD



METRIC CONVERSION
 DISTANCES AND COORDINATES SHOWN ON THIS PLAN ARE IN METRES AND CAN BE CONVERTED TO FEET BY DIVIDING BY 0.3048

- LEGEND**
- DENOTES FOUND MONUMENTS
 - SET MONUMENTS
 - IB IRON BAR
 - SIB STANDARD IRON BAR
 - SSIB SHORT STANDARD IRON BAR
 - ▲ ORP OBSERVED REFERENCE POINT
 - PB PLASTIC BAR
 - PIN PROPERTY IDENTIFICATION NUMBER - ALL PINS SHOWN ARE LAND TITLES UNLESS NOTED OTHERWISE
 - WT WITNESS
 - CON CONCESSION
 - SWTSR SOUTHWEST OF THE TORONTO AND SYDENHAM ROAD
 - PWF POST AND WIRE FENCE
 - P1 PLAN 16R-6935
 - P2 PLAN 16R-7559
 - P3 PLAN 17R-1721
 - P4 PLAN OF SURVEY BY P.J. WILLIAMS OLS, DATED NOVEMBER 5, 1970
 - M MEASURED
 - S SET
 - 1211 P.J. WILLIAMS OLS
 - 1703 COYNE AND WHALE SURVEYING LIMITED
 - 1841 RAIKES SURVEYING LTD.
- ALL BEARINGS AND DISTANCES SHOWN HEREON ARE MEASURED UNLESS INDICATED OTHERWISE

BEARING NOTE
 BEARINGS ARE UTM GRID, DERIVED FROM OBSERVED REFERENCE POINTS A AND B BY REAL TIME NETWORK (RTN) OBSERVATIONS, UTM ZONE 17, NAD83 (CSRS) (2010).

FOR BEARING COMPARISONS, THE FOLLOWING ROTATIONS WERE USED:

PLAN	ROTATION
P1, P2	0°01'54" CW
P3, P4	

DISTANCES ON THIS PLAN ARE GROUND AND CAN BE CONVERTED TO GRID BY MULTIPLYING BY THE COMBINED SCALE FACTOR OF 0.999556.

OBSERVED REFERENCE POINTS (ORP'S) DERIVED FROM GPS OBSERVATIONS USING THE TOPNET NETWORK (RTN), UTM ZONE 17, NAD83 (CSRS)(2010)

COORDINATES TO URBAN ACCURACY PER SEC. 12(2) OF O. REG. 216/10.

POINT ID	NORTHING	EASTING
ORP (A)	4 893 393.460	543 831.973
ORP (B)	4 893 649.564	543 518.409

COORDINATES CANNOT, IN THEMSELVES, BE USED TO RE-ESTABLISH CORNERS OR BOUNDARIES SHOWN ON THIS PLAN.

SCHEDULE

PART	LOT	CONCESSION	PIN
1	PART OF LOTS 205 & 206	CONCESSION 2	PART OF PIN 37266-0211
2	PART OF LOTS 205 & 206	SWTSR	ALL OF PIN 37266-0212

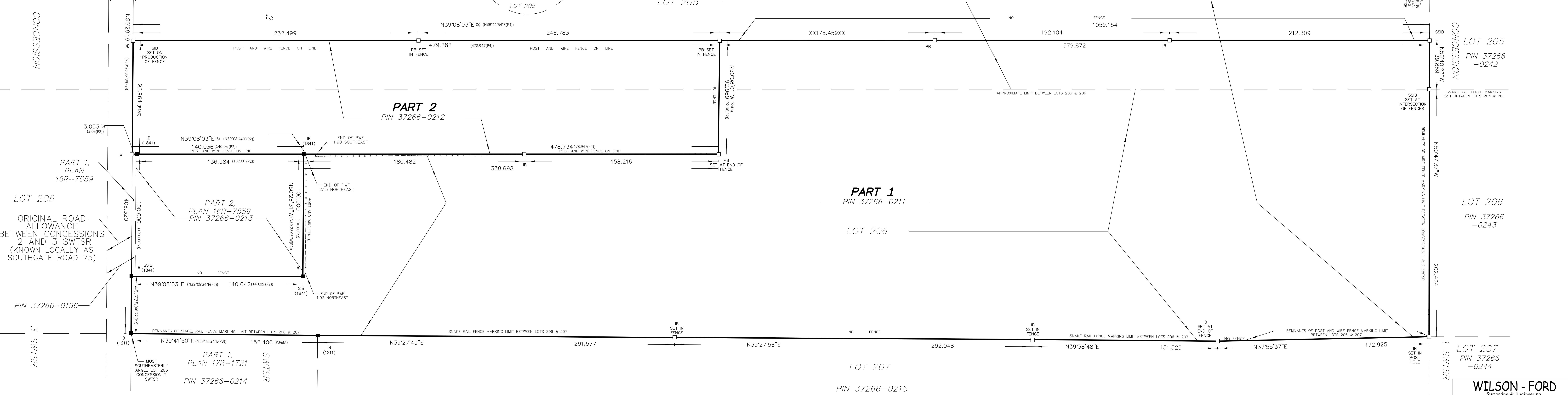
PLAN 16R-11962
 Received and deposited
 November 23rd, 2023
 Dayna Spencer
 Representative for the
 Land Registrar for the
 Land Titles Division of
 Grey (No.16)

SURVEYOR'S CERTIFICATE
 I CERTIFY THAT:

- THIS SURVEY AND PLAN ARE CORRECT AND IN ACCORDANCE WITH THE SURVEYS ACT, THE SURVEYORS ACT, THE LAND TITLES ACT AND THE REGULATIONS MADE UNDER THEM.
- THE SURVEY WAS COMPLETED ON THE 12th DAY OF JULY 2023.

31 OCTOBER, 2023
 DATE
 GREG FORD, P. Eng (CIVIL)
 ONTARIO LAND SURVEYOR

THIS PLAN OF SURVEY RELATES TO AOLS PLAN SUBMISSION FORM NUMBER V-62472.



WILSON - FORD
 Surveying & Engineering
 120 KING ST. E., Box 294,
 MOUNT FOREST ON, N0G 2L0
 PHONE (519)323-2451
 PROJECT No.: 23-9869 ELIAS MARTIN