

# Xplore Inc. Broadband for Rural Living



Presented to the Township of Southgate  
Virtual Public Meeting

*Sarah Duncan (Forbes Bros Ltd) on behalf of Xplore*

**November 27, 2024**



# Xplore is Canada's leading rural broadband provider



## Our Customers

Today, we are serving mainly rural customers, connecting almost 1 million Canadians

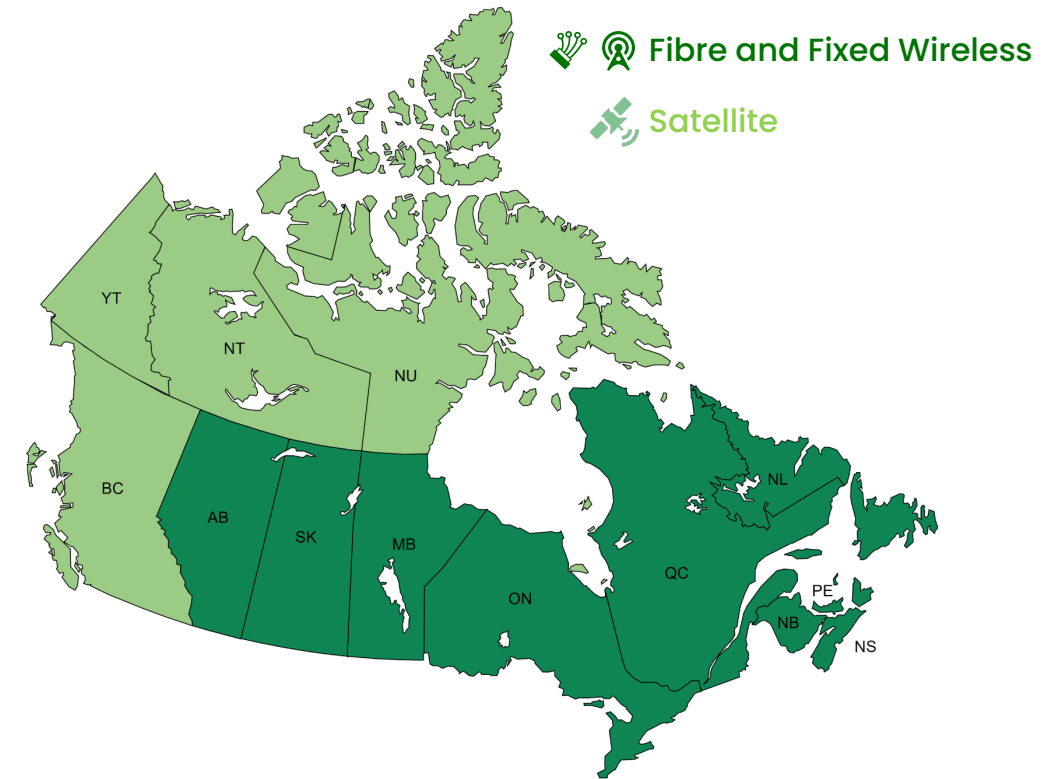
## Our Vision

The relentless pursuit of an improved broadband experience for better everyday living of rural Canadians.



# A National Broadband Network

- ▶ LTE wireless footprint that covers over 1.1 million households (1,800+ sites)
  - ▶ 5G Home Internet available in NB and rolling out in Alberta, Manitoba, Ontario, PEI and Newfoundland now
  - ▶ 100/10 Mbps plus unlimited data
- ▶ Fibre-to-the-premise footprint passing over 55,000 households (5,400+ km)
  - ▶ Projects underway in 6 provinces to increase to 218,000+ households (18,400+ km) with another potential 390,000+ households (30,000+ km) in design
  - ▶ 1 Gbps plus unlimited data
- ▶ Constellation of four (plus 1) 4G satellites
  - ▶ 4 High Throughput Satellites covering 97% of Canadians
  - ▶ New Jupiter 3, launched in 2023, will make 100 Mbps service available to over 90% of the Canadian population



Xplore's LTE/5G network carries more data per month than Bell Canada's entire mobile network that serves over 8 million customers

# Regulations and Roles

## ❑ Innovation, Science and Economic Development Canada (ISED)

- ❑ Has ultimate jurisdiction for the approval of telecommunications facilities
- ❑ Requires carriers to follow a consultation process in compliance with the Antenna Tower Siting Procedures (CPC-2-0-03, i5)

## ❑ Telecommunications Companies

- ❑ Respond to public demand for improved wireless connectivity by improving and expanding network coverage
- ❑ Follow municipal policy preferences and consultation requirements

## ❑ Municipalities

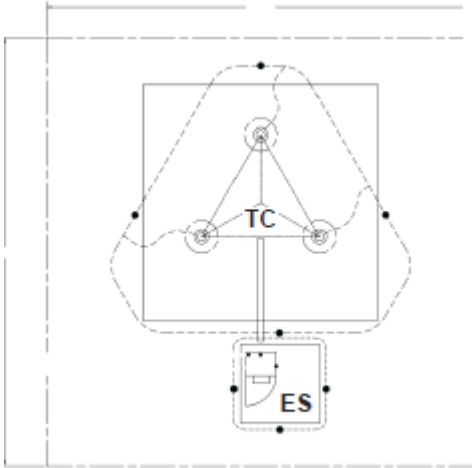
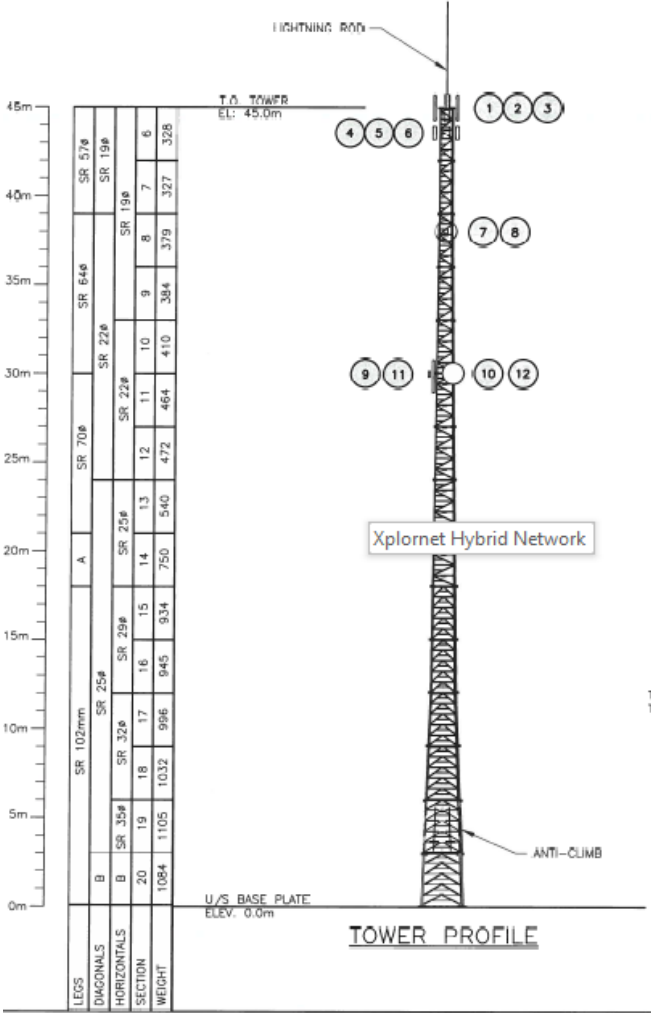
- ❑ Guides development through the use of policy and procedures, in compliance with CPC-2-0-03
- ❑ Represents the preferences of the local population for the design and location of wireless telecommunications facilities

## ❑ The Public

- ❑ Will be notified of a proposal, may ask questions and provide comments
- ❑ Provides input on the preferred design and location



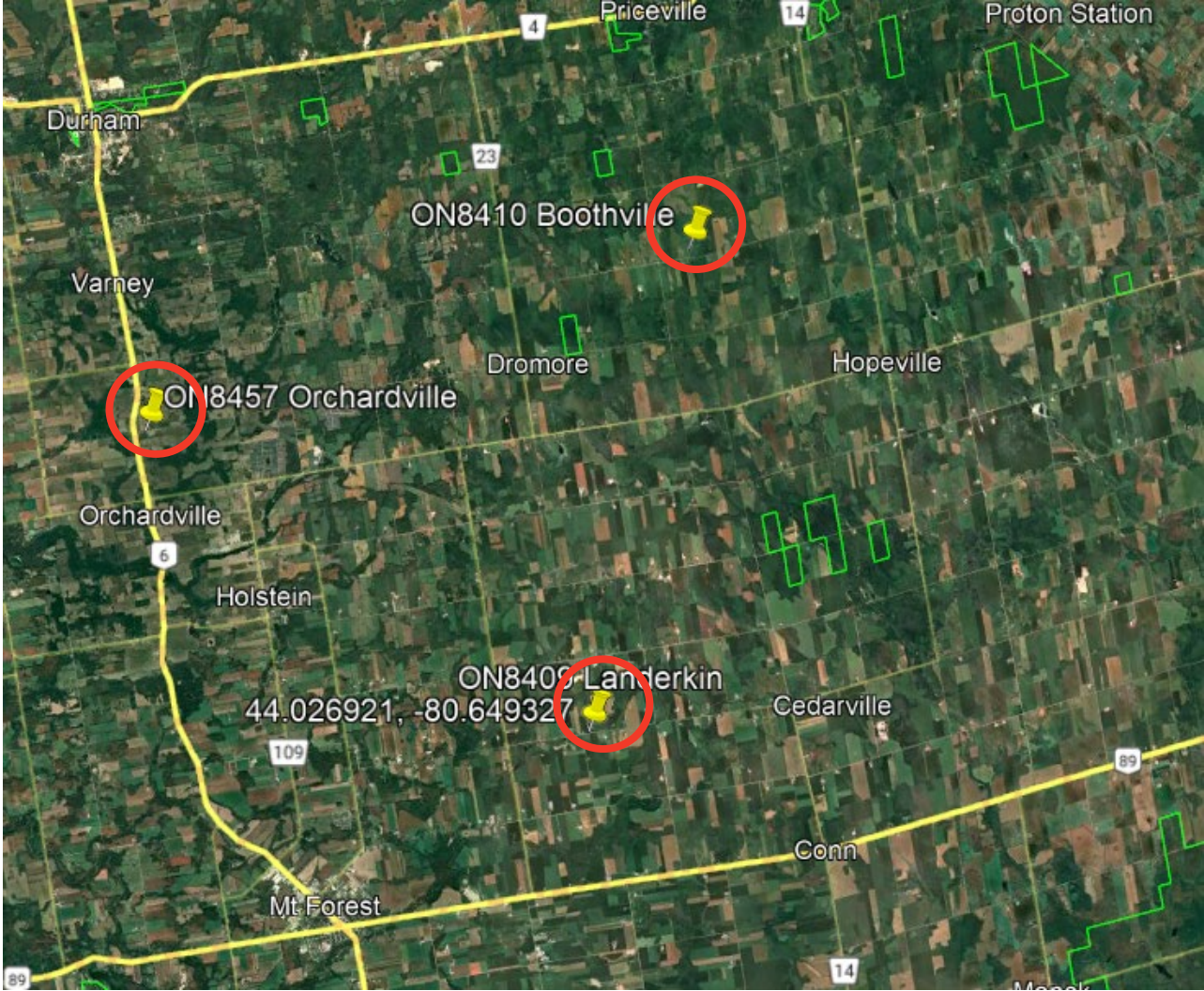
# Typical Elevation Profile and Site Plan



TC - Tower Centre  
ES - Equipment Shelter



# Proposed Tower Locations

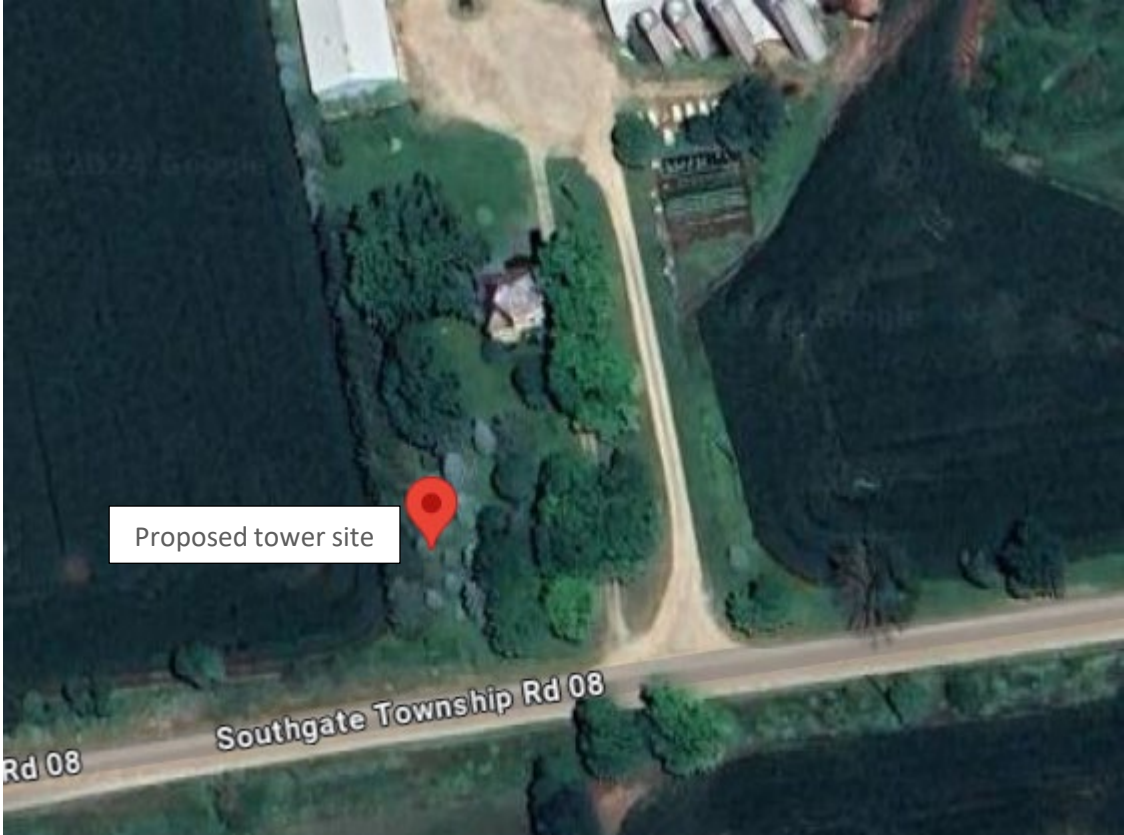


# Arial Images: 084231 Southgate Township Rr. 8, Mount Forest

➤ Area maps of proposed tower location

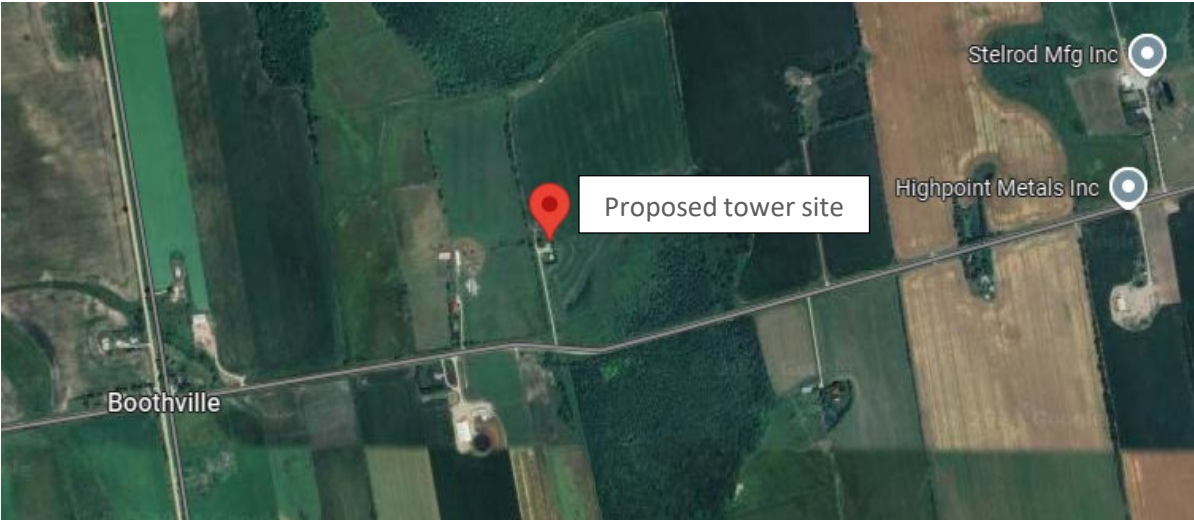


ON8409 Landerkin



# Arial Images: 245019 Southgate Rd 24, Proton Station

➤ Area maps of proposed tower location



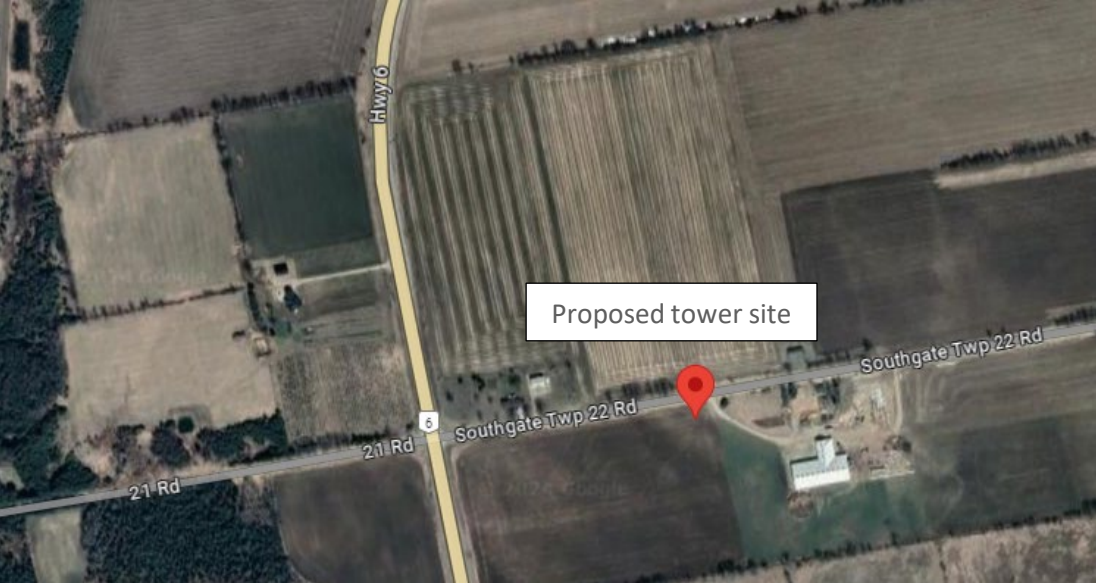
ON8410 Boothville





# Arial Images: 223044 Southgate Rd. 22, Durham

➤ Area maps of proposed tower location



ON8457 Orchardville



# Site Summary

## ➤ Where we are today

- New broadband tower required to improve coverage within the Township of Southgate
- Locations are limited by engineering design and existing network
- Locations are currently agricultural
- No colocation opportunities
- No concerns from agencies
- Notification has been completed as per the municipal protocol
- Consultation closes on December 7, 2024

Thank you  
Merci

