




Severance Sketch

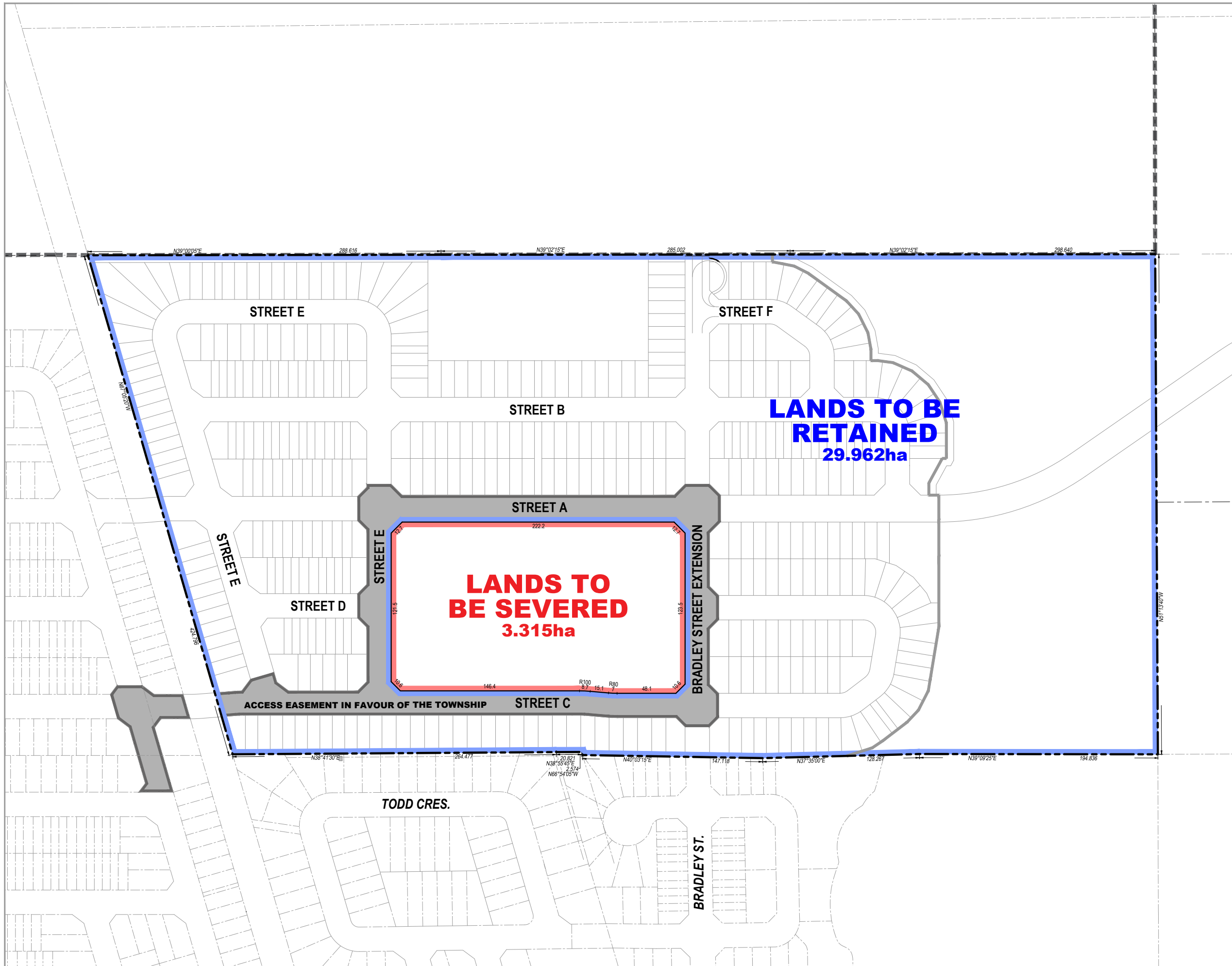
School Block

Glenelg Phase 3

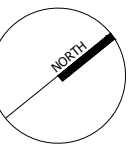
Part of Lots 225, and 226
Concession 2, SWTSR
Township of Southgate
County of Grey

Legend

-  Lands to be Severed
-  Lands to be Retained
-  Access Easement in Favour of the Township



DATE	Dec. 12, 2024
SOURCES	MHBC - Draft Plan of Subdivision - 2024-05-21
SCALE	0 15 30 45 60 75 Metres



N:\Southgate\24365A\Drawings\Severance Sketch