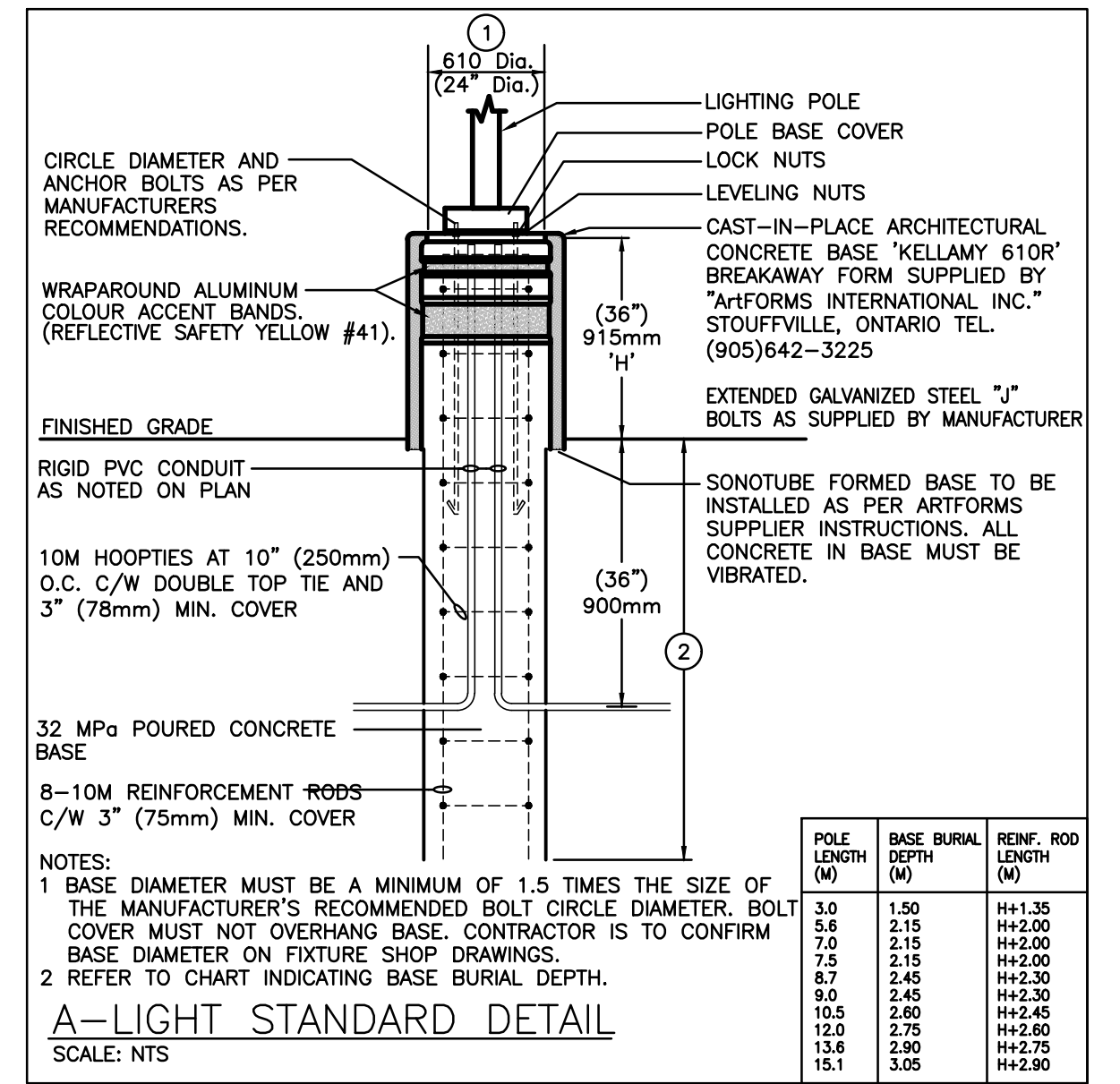
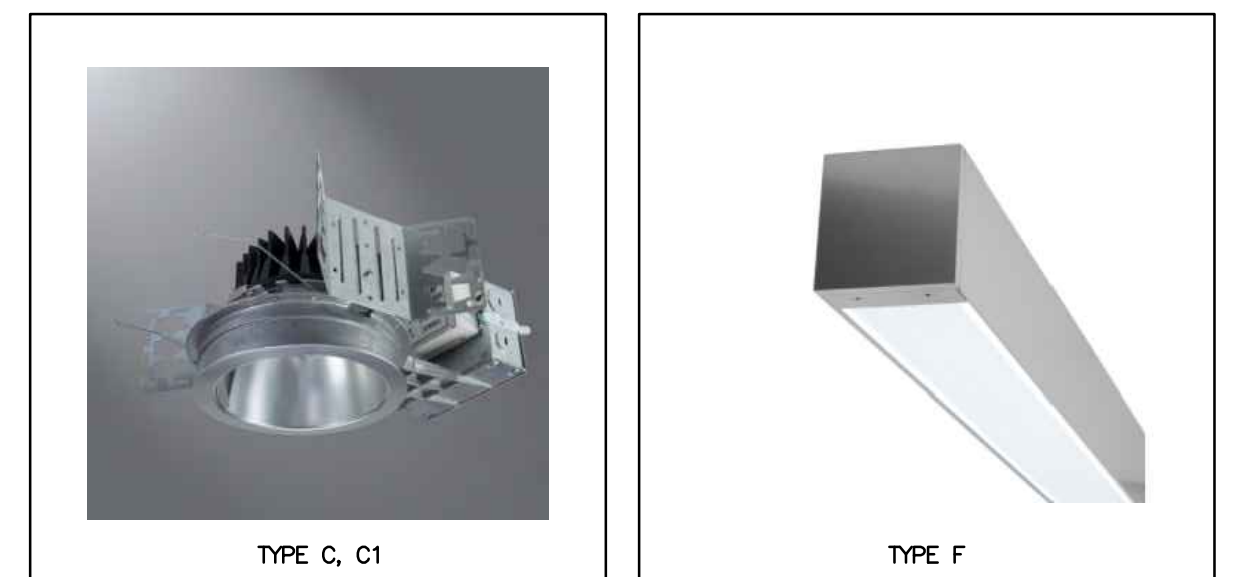


SPECIFIC NOTES

- 1 APPROXIMATE LOCATION OF MAIN ELECTRICAL ROOM. REFER TO FLOOR PLANS FOR EXACT LOCATION.
- 2 INDICATES LOCATION OF NEW PAD MOUNTED TRANSFORMER ON NEW CONCRETE BASE.
- 3 INDICATES APPROXIMATE ROUTING OF SECONDARY DUCTBANK.



LABEL	TYPE	VERTICAL/HORIZONTAL	DESCRIPTION	UNITS	AVG.	MAX.	MIN.	AVG./MIN.	MAX./MIN.
P1	ILLUMINANCE	HORIZONTAL	WEST PARKING	foot candles	1.83	3.8	0.1	18.30	38.00
P2	ILLUMINANCE	HORIZONTAL	EAST PARKING	foot candles	1.66	5.3	0.2	8.30	26.50
P3	ILLUMINANCE	HORIZONTAL	ACCESS ROADS	foot candles	2.71	7.3	0.6	4.52	12.17
P4	ILLUMINANCE	HORIZONTAL	SIDE WALK	foot candles	0.68	1.6	0.2	3.40	8.00
P5	ILLUMINANCE	HORIZONTAL	BEYOND PROPERTY LINE	foot candles	0.00	0.1	0.0	--	--

	CEILING OR WALL MOUNTED LIGHT FIXTURE TYPE AS INDICATED
	POLE MOUNTED LIGHT FIXTURE
	TRANSFORMER
	NOTE INDICATOR
	DETAIL INDICATOR
	PHOTOMETRIC LEVEL (foot candle)

NO.	DATE	PARTICULAR
01	25.02.23	ISSUED FOR COORDINATION
02	25.02.07	ISSUED FOR SPA

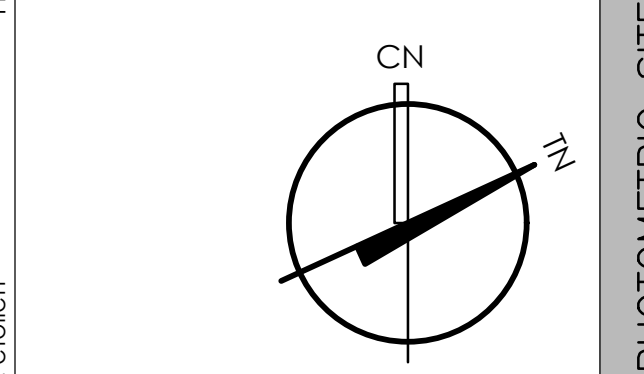
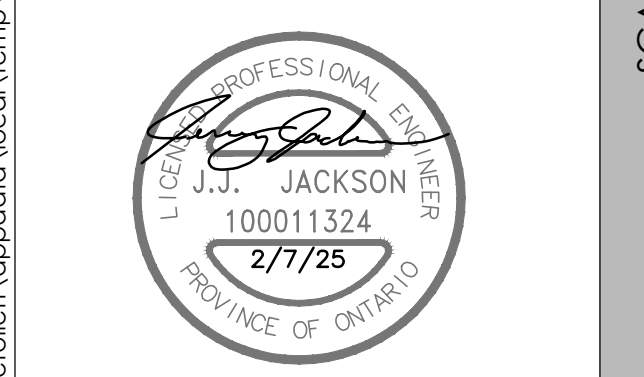
The contractor shall verify all dimensions and report all errors and discrepancies to the Consultant before commencement of the work. The drawings show general arrangement of services. Follow as closely as actual building construction will permit. Obtain approval for relocation of services from Consultant before commencement of the work. The drawings do not indicate all offsets fitting and accessories which may be required. Provide the same to meet the required conditions. Drawings and specifications, etc., prepared and issued by the consultant are the property of the consultant and must be returned at the completion of the project. These documents are not to be duplicated or copied without the consent of the Consultant. Do not scale this drawing. © 2025 DEI & Associates Inc.



CLIENT:
BLUEWATER DISTRICT SCHOOL BOARD

PROJECT:
22431
DUNDALK E.S. & CHILDCARE

ORIGINAL PAGE SIZE: ARCH E1 - 30" x 42"



ESL1

EXTERIOR LIGHT FIXTURE SCHEDULE

Item	Manufacturer/Catalog Number	Voltage	Lamp					Mounting	Listings	Description
			Type	Lumens	Colour Temperature	Wattage	CRF			
C	COOPER CAT. #LDB8100010-ERB81020830-BLBW1H INDY CAT. #LB-33LM-30K-MVOLT-G4-80CRI-GZ1-WPR-CSS WET ELITE CAT. #HHB-LED-900L-DM10-MVOLT-WD-30K-90 -HHB-8501-SHZ-SHZ INTENSE CAT. #GDBDRLL30-D101-WF-RDB00C-SFW	120V	LED	1000	3000K	11W	80	RECESSED	N/A	8" (200mm) LED CANOPY DOWNLIGHT FIXTURE, SELF-FLANGED, DAMP LOCATION LISTING C/W SPECULAR CLEAR FINISH AND WIDE BEAM REFLECTOR.
C1	COOPER CAT. #LDB8300010-ERB83040830-BLBW1H INDY CAT. #LB-33LM-30K-MVOLT-G4-80CRI-GZ1-SS-WET ELITE CAT. #HHB-LED-3000L-DM10-MVOLT-MD-30K-90 -HHB-8501-SHZ-SHZ INTENSE CAT. #GDBDRLL30-D101-WF-RDB00C-SFW	120V	LED	3000	3000K	27.6W	80	RECESSED	N/A	SAME AS TYPE 'C' WITH INCREASED LUMEN OUTPUT AND MEDIUM BEAM REFLECTOR.
F	PRUDENTIAL CAT. #P61-LED3-LO-4-WA-XXX-D1-UNV-SUR-DM01 FINNACLE CAT. #EX3-WET-N-830-4-S-U-OL2-1-O-W AXIS CAT. #WBSLED-400-80-30-S-4-X -UNV-OP-1-SC BIRCHWOOD CAT. #VAN-LED-400-CLO-140-30-4-DR-DM-STND-S-MT-FW-120-D1	120V	LED	1877	3000K	21W	80	SURFACE	N/A	4" (122mm) LONG LED LINEAR FIXTURE C/W FROSTED ACRYLIC LENS, SURFACE MOUNTING, AND WET LOCATION RATING.
P	COOPER CAT. #GLEON-SA2C-730-U-T4W-HSS SIGNIFY CAT. #P15-P-A06-730-T4S-AR1-UNV-HIS-XX LITHONIA CAT. #DSX1-LED-P3-30K-T4M-MVOLT-HS CREE CAT. #OSQM-B-11L-30K7-4M-OSQ-BLSMF POLE: VALMONT CAT. #4SS-17-X-X-XX	120V	LED	2-13098	3000K	2-113W	80	POLE	DLC	TWIN HEAD POLE MOUNTED DECORATIVE FIXTURE C/W CAST ALUMINUM HOUSING, TYPE 4 WIDE DISTRIBUTION, HOUSE-SIDE SHIELD, AND 4" (102mm) STRAIGHT SQUARE 17" (5.18m) TALL POLE C/W ROUND DECORATIVE BASE COVER, ENTIRE ASSEMBLY SHALL HAVE FINISH TO SUIT ARCHITECT.
P1	COOPER CAT. #GLEON-SA2C-730-U-T4FT-HSS SIGNIFY CAT. #P15-P-A06-730-T4S-AR1-UNV-HIS-XX LITHONIA CAT. #DSX1-LED-P3-30K-T4M-MVOLT-HS CREE CAT. #OSQM-B-11L-30K7-4M-OSQ-BLSMF POLE: VALMONT CAT. #4SS-17-X-X-XX	120V	LED	13258	3000K	113W	80	POLE	DLC	SAME AS TYPE 'P' EXCEPT WITH TYPE 4 FORWARD THROW DISTRIBUTION.
P2	COOPER CAT. #GLEON-SA3C-730-U-T4FT-HSS SIGNIFY CAT. #P26-RDL-WW-G2-AR-4-UNV-HIS-XX LITHONIA CAT. #DSX1-LED-P7-30K-T4M-MVOLT-HS CREE CAT. #OSQM-B-22L-30K7-4M-OSQ-BLSLF POLE: VALMONT CAT. #4SS-17-X-X-XX	120V	LED	19783	3000K	166W	80	POLE	DLC	SAME AS TYPE 'P' EXCEPT WITH TYPE 4 FORWARD THROW DISTRIBUTION.
P3	COOPER CAT. #GLEON-SA2C-730-U-T4W-HSS SIGNIFY CAT. #P15-P-A06-730-T4S-AR1-UNV-HIS-XX LITHONIA CAT. #DSX1-LED-P3-30K-T4M-MVOLT-HS CREE CAT. #OSQM-B-11L-30K7-4M-OSQ-BLSMF POLE: VALMONT CAT. #4SS-17-X-X-XX	120V	LED	11592	3000K	113W	80	POLE	DLC	SAME AS TYPE 'P' EXCEPT WITH TYPE 4 WIDE DISTRIBUTION.
P4	COOPER CAT. #GLEON-SA1A-730-U-T2 SIGNIFY CAT. #P15-P-A02-730-T2M-AR1-UNV-XX LITHONIA CAT. #DSX0-LED-P1-30K-T2S-MVOLT CREE CAT. #OSQM-B-4L-30K7-3M POLE: VALMONT CAT. #4SS-9-X-X-XX	120V	LED	4359	3000K	34W	80	POLE	DLC	SAME AS TYPE 'P' EXCEPT WITH TYPE 2 DISTRIBUTION AND 9' (2.74m) TALL POLE.
W1	COOPER CAT. #SC-SA1B-730-U-SL2-XX LITHONIA CAT. #WSRLED-P2-30K-SR2-MVOLT-XXXXX GARDOO CAT. #104L-16L-530-WW-G1-2-UNV-XX	120V	LED	3451	3000K	25.4W	80	WALL	DLC	WALL MOUNTED SCOWNE FIXTURE C/W CAST ALUMINUM HOUSING, TYPE 2 DISTRIBUTION C/W BACK LIGHT CONTROL AND TOOLLESS ENTRY TO HINGED LENS ASSEMBLY, MOUNTED PER ARCHITECTURAL DRAWINGS, FIXTURES SHALL HAVE CUSTOM FINISH TO SUIT ARCHITECT.
W2	COOPER CAT. #SC-SA1B-730-U-T4FT-XX LITHONIA CAT. #WSRLED-P2-30K-SR4-MVOLT-XXXXX GARDOO CAT. #104L-16L-530-WW-G1-4-UNV-XX	120V	LED	3456	3000K	25.4W	80	WALL	DLC	SAME AS TYPE 'W' EXCEPT WITH TYPE 4 FORWARD THROW DISTRIBUTION.

- NOTES: 1 LED LUMEN VALUES QUOTED FOR FIXTURES ARE TO BE CONSIDERED MINIMUM, AND AS ABSOLUTE OR DELIVERED LUMENS. LUMEN VALUES SHOULD NOT EXCEED MORE THAN 10% OF SPECIFIED OUTPUT.
2 WHERE NOTED ABOVE THAT FIXTURES ARE TO HAVE FINISH TO SUIT ARCHITECT THE FINISH WILL BE SELECTED FROM MANUFACTURER'S OPTIONAL COLOUR CHART (i.e. RAL COLOURS OR EQUAL). PROVIDE THIS COLOUR CHART WITH SHOP DRAWING SUBMITTAL.
3 EQUAL MANUFACTURERS FOR THIS FIXTURE MUST CONTACT THE CONSULTANTS OFFICE A MINIMUM OF 10 CALENDAR DAYS PRIOR TO TENDER CLOSE TO OBTAIN AN ELECTRONIC VERSION OF THE SITE PLAN. THEY MUST THEN PROVIDE PHOTOMETRIC ANALYSIS FOR THE EXTERIOR FIXTURE LAYOUT INDICATED USING THEIR PROPOSED FIXTURE.
4 ALL FIXTURES OPERATING ON 347 VOLTS MUST BE PROVIDED WITH AN INTEGRAL DISCONNECTING MEANS CONFORMING TO RULE #30-308(4) OF THE ELECTRICAL SAFETY CODE IF THERE ARE ANY DISCREPANCIES BETWEEN THE FIXTURE PART NUMBER AND DESCRIPTION, IT IS THE RESPONSIBILITY OF THIS CONTRACTOR TO BRING THESE TO THE ELECTRICAL CONSULTANTS ATTENTION PRIOR TO TENDER CLOSE. NO EXTRAS WILL BE ENTERTAINED FOR FAILURE TO DO SO. FINAL FIXTURE CHARACTERISTICS AND DESCRIPTION WILL BE MARKED BY CONSULTANT AT TIME OF SHOP DRAWING REVIEW.

REVISIONS

NO.	DATE	PARTICULAR
01	25.02.03	ISSUED FOR COORDINATION
02	25.02.07	ISSUED FOR SPA

The contractor shall verify all dimensions and report all errors and discrepancies to the Consultant before commencement of the work. The drawings show general arrangement of services. Follow as closely as actual building construction will permit. Obtain approval for relocation of service from Consultant before commencement of the work. The drawings do not indicate all offsets fitting and accessories which may be required. Provide the same to meet the required conditions. Drawings and specifications, etc., prepared and issued by the consultant are the property of the consultant and must be returned at the completion of the project. These documents are not to be duplicated or copied without the consent of the Consultant. Do not scale this drawing. © 2025 DEI & Associates Inc.



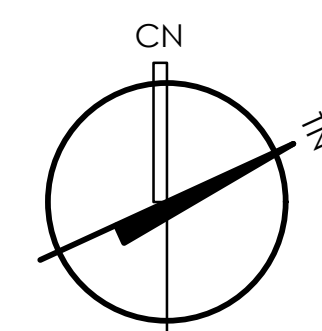
55 Northland Road,
Waterloo, ON, N2V 1Y8
Phone: 519-745-9555
Fax: 519-745-9553
Website: deiassociates.ca
Project Number: 22434

MECHANICAL | ELECTRICAL | AQUATIC

CLIENT:
BLUEWATER
DISTRICT SCHOOL BOARD

PROJECT:
22431
DUNDALK E.S. & CHILDCARE

ORIGINAL PAGE SIZE: ARCH E1 - 30" x 42"



ESL2

SCALE: AS SHOWN
LIGHT FIXTURE SCHEDULE