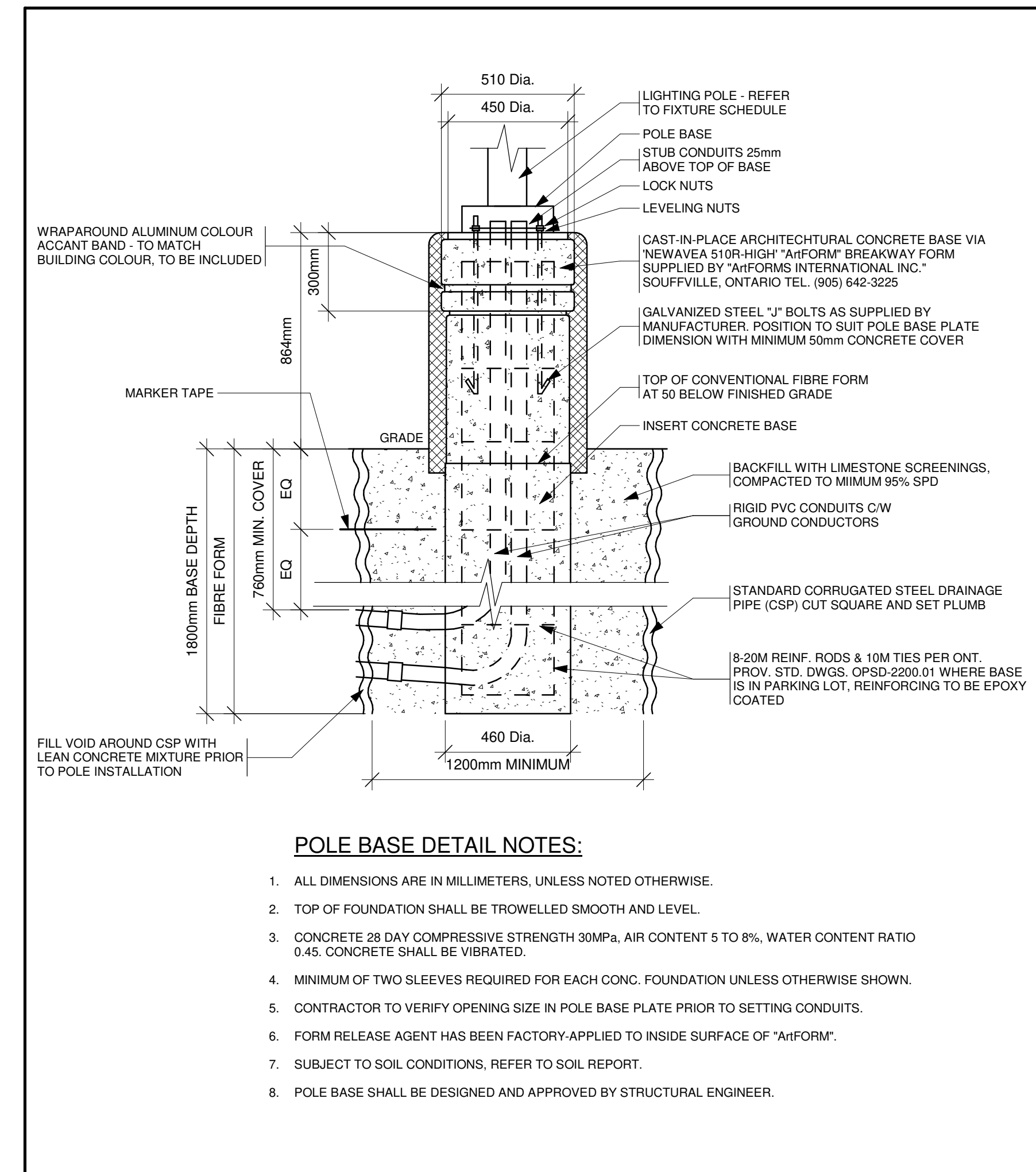


ELECTRICAL LEGEND	
LIGHTING	
	WALL MOUNTED FIXTURE (LETTER DENOTES TYPE)
	POLE MOUNTED FIXTURE (LETTER DENOTES TYPE)

LIGHTING FIXTURE SCHEDULE									
TYPE	MANUFACTURER	MODEL	CATALOGUE NUMBER	VOLTAGE	WATTAGE	LUMENS & COLOUR TEMPERATURE	MOUNTING	MOUNTING HEIGHT	REMARKS
SA1	McGRAW-EDISON	GLEON GALLEON	GLEON-AF-04-LED-E1-T4W-BZ-8030	120 V	225 W	23,000 LUMENS, 3000K	POLE	20' POLE WITH 2'-10" BASE	PROVIDE 4" SSS POLE. SEE DETAIL 2 FOR POLE BASE DETAIL.
SA2	McGRAW-EDISON	GLEON GALLEON	GLEON-AF-10-LED-E1-T4FT-BZ-8030-1200	120 V	640 W	62,900 LUMENS, 3000K	POLE	20' POLE WITH 2'-10" BASE	PROVIDE 4" SSS POLE. SEE DETAIL 2 FOR POLE BASE DETAIL.
SA3	McGRAW-EDISON	GLEON GALLEON	GLEON-AF-04-LED-E1-SL4-BZ-8030	120 V	225 W	24,400 LUMENS, 3000K	POLE	20' POLE WITH 2'-10" BASE	PROVIDE 4" SSS POLE. SEE DETAIL 2 FOR POLE BASE DETAIL.
SA4	McGRAW-EDISON	GLEON GALLEON	GLEON-AF-10-LED-E1-SL4-BZ-8030-1200-HSS	120 V	640 W	59,400 LUMENS, 3000K	POLE	20' POLE WITH 2'-10" BASE	PROVIDE 4" SSS POLE. SEE DETAIL 2 FOR POLE BASE DETAIL.
SB	STREETWORKS	GAW GALLEON	GAW-AF-02-LED-U-T4W-BZ-8030	120 V	113 W	11,800 LUMENS, 3000K	WALL	18'-8"	

PHOTOMETRIC LIGHTING LEVELS					
AREA	AVG	MAX	MIN	MAX/MIN	AVG/MIN
NORTH LOT	2.9	14.5	0.0	NA	NA
SOUTH TANK AREA	1.5	4.1	0.0	NA	NA
PROPERTY LINE	1.5	2.5	0.4	6.3:1	3.8:1

SOFTWARE USED: VISUAL LIGHTING 2020 BUILD 2.10.0044



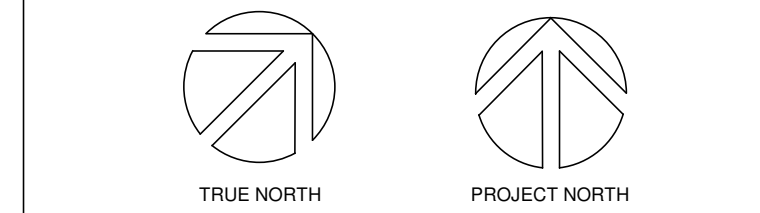
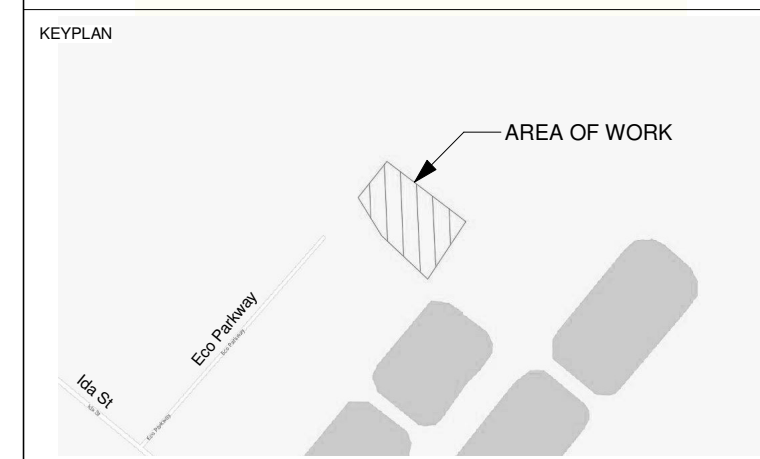
POLE BASE DETAIL NOTES:

1. ALL DIMENSIONS ARE IN MILLIMETERS, UNLESS NOTED OTHERWISE.
2. TOP OF FOUNDATION SHALL BE TROWELLED SMOOTH AND LEVEL.
3. CONCRETE 28 DAY COMPRESSIVE STRENGTH 30MPa, AIR CONTENT 5 TO 8%, WATER CONTENT RATIO 0.45. CONCRETE SHALL BE VIBRATED.
4. MINIMUM OF TWO SLEEVES REQUIRED FOR EACH CONC. FOUNDATION UNLESS OTHERWISE SHOWN.
5. CONTRACTOR TO VERIFY OPENING SIZE IN POLE BASE PLATE PRIOR TO SETTING CONDUITS.
6. FORM RELEASE AGENT HAS BEEN FACTORY-APPLIED TO INSIDE SURFACE OF "AIRFORM".
7. SUBJECT TO SOIL CONDITIONS, REFER TO SOIL REPORT.
8. POLE BASE SHALL BE DESIGNED AND APPROVED BY STRUCTURAL ENGINEER.

2 POLE BASE DETAIL
ES01 N.T.S.

DRAWING NOTES:

1. POLE BASE TO BE POSITIONED 300mm BACK INTO EMBANKMENT.
2. POLE BASE MOUNTED TO UPPER SIDE OF RETAINING WALL LEVEL.
3. POLE BASE MOUNTED TO TOP OF RETAINING WALL. COORDINATE WITH CONCRETE CONTRACTOR.
4. ENSURE POLE IS MOUNTED NOT CLOSER THAN 10' TO ENBRIDGE FUELLING EQUIPMENT.



No.	ISSUANCE	DATE
1	ISSUED FOR SPA	2020.10.02

CLIENT
PETAWAWA BIOFUEL

Enter client address here
PROJECT
SOUTHGATE BIOFUEL FACILITY

ECO PARKWAY, DUNDALK, ON
TITLE
ELECTRICAL SITE PLAN

WALTERFEDY
KITCHENER HAMILTON 800.685.1378 walterfedy.com



REPRODUCTION OR DISTRIBUTION FOR PURPOSES OTHER THAN AUTHORIZED BY WALTERFEDY IS FORBIDDEN. CONTRACTORS SHALL VERIFY AND BE RESPONSIBLE FOR ALL DIMENSIONS AND CONDITIONS ON THE JOB AND REPORT ANY VARIATIONS FROM THE DIMENSIONS AND CONDITIONS SHOWN ON DRAWINGS TO WALTERFEDY. DO NOT SCALE THIS DRAWING.

COPYRIGHT © 2020 WalterFedy Inc.	
SCALE: As indicated	SHEET NO: ES01
DATE: 09/24/20	
PROJECT NO: 2019-0413-20	
FILE: SR	
DRAWN BY: SR	
CHECKED BY: Checker	

DESCRIPTION
The Galleon™ LED luminaire delivers exceptional performance in a highly scalable, low-profile design. Patented, high-efficiency AccuLED Optics™ system provides uniform and energy conscious illumination to walkways, parking lots, roadways, building areas and security lighting applications. IP66 rated and UL/cUL Listed for wet locations.

SPECIFICATION FEATURES

Construction
Extruded aluminum driver enclosure thermally isolated from Light Squares for optimal thermal performance. Heavy-wall, die-cast aluminum end caps enclose housing and die-cast aluminum heat sinks. A unique, patent pending interlocking housing and heat sink provides scalability with superior structural rigidity. 3G vibration tested and rated. Optional tool-less hardware available for ease of entry into electrical chamber. Housing is IP66 rated.

Optics
Patented, high-efficiency injection-molded AccuLED Optics technology. Optics are precisely designed to shape the distribution maximizing efficiency and application spacing. AccuLED Optics create consistent distributions with the scalability to meet customized application requirements. Offered standard in 4000K (+/- 275K) CCT 70 CRI. Optional 3000K, 5000K and 6000K CCT.

Electrical
LED drivers are mounted to removable tray assembly for ease of maintenance. 120-277V 50/60Hz, 347V 60Hz or 480V 60Hz operation. 480V is compatible for use with 480V Wye systems only. Standard with 0-10V dimming. Shipped standard with Cooper Lighting Solutions proprietary circuit module designed to withstand 10kV of transient line surge. The Galleon LED luminaire is suitable for operation in -40°C to 40°C ambient environments. For applications with ambient temperatures exceeding 40°C, specify the HA (High Ambient) option. Light Squares are IP66 rated. Greater than 90% lumen maintenance expected at 60,000 hours. Available in standard 1A drive current and optional 800mA, 800mA and 1200mA drive currents (nominal).

Mounting
STANDARD ARM MOUNT:
Extruded aluminum arm includes internal bolt guides allowing for easy positioning of fixture during mounting. When mounting two or more luminaires at 90° and 120° apart, the EA extended arm

may be required. Refer to the arm mounting requirement table. Round pole adapter included. For wall mounting, specify wall mount bracket option. **QUICK MOUNT ARM:** Adapter is bolted directly to the pole. Quick mount arm slide into place on the adapter and is secured via two screws, facilitating quick and easy installation. The versatile, patent pending, quick mount arm accommodates multiple drill patterns ranging from 1-1/2" to 4-7/8". Removal of the door on the quick mount arm enables wiring of the fixture without having to access the driver compartment. A knock-out enables round pole mounting.

Finish
Housing finished in super durable TGIC polyester powder coat paint, 2.5 mil nominal thickness for superior protection against fade and wear. Heat sink is powder coated black. Standard housing colors include black, bronze, grey, white, dark platinum and graphite metallic. RAL and custom color matches available.

Warranty
Five-year warranty.

McGraw-Edison

Catalog #	Type
Project	Date
Comments	
Prepared by	



GLEON GALLEON

1-10 Light Squares
Solid State LED
AREA/SITE LUMINAIRE



CERTIFICATION DATA
3G Vibration Rated
DesignLights Consortium™ Qualified*
Dark Sky Approved (3000K CCT and warmer only)
IP66 Rated
ISO 9001
UL/cUL Wet Location Listed

ENERGY DATA
Electronic LED Driver
≥0.9 Power Factor
≤20% Total Harmonic Distortion
120V/277V 50/60Hz
347V/480V 60Hz
-40°C Min. Temperature
40°C Max. Temperature
50°C Max. Temperature (HA Option)

TDS000020EN
June 2, 2020 12:06 PM
*www.designlights.org

STREETWORKS

DESCRIPTION
The Galleon™ Wall LED luminaire's appearance is complementary with the Galleon area and site luminaire bringing a modern architectural style to lighting applications. Flexible mounting options accommodate wall surfaces in both an upward and downward configuration. The Galleon family of LED products deliver exceptional performance with patented, high-efficiency AccuLED Optics™, providing uniform and energy conscious lighting for parking lots, building and security lighting applications.

SPECIFICATION FEATURES

Construction
Driver enclosure thermally isolated from optics for optimal thermal performance. Heavy wall aluminum housing die-cast with integral external heat sinks to provide superior structural rigidity and an IP66 rated housing. Overall construction passes a 1.5G vibration test to ensure mechanical integrity. **UP LIGHTING:** Specify with the IPL option for inverted mount upright housing with additional protections to maintain IP rating.

Optics
Choice of thirteen patented, high-efficiency AccuLED Optics. The optics are precisely designed to shape the distribution maximizing efficiency and application spacing. AccuLED Optics create consistent distributions with the scalability to meet customized application requirements. Offered standard in 4000K (+/- 275K) CCT and minimum 70 CRI. Optional 3000K, 5000K

and 6000K CCT. Greater than 90% lumen maintenance expected at 60,000 hours. Available in standard 1A drive current and optional 1200mA, 800mA, and 600mA drive currents.

Electrical
LED drivers are mounted for ease of maintenance. 120-277V 50/60Hz, 347V or 480V 60Hz operation. 480V is compatible for use with 480V Wye systems only. Drivers are provided standard with 0-10V dimming. An optional Cooper Lighting Solutions proprietary surge protection module is available and designed to withstand 10kV of transient line surge. The Galleon Wall LED luminaire is suitable for operation in -40°C to 40°C ambient environments. For applications with ambient temperatures exceeding 40°C, specify the HA (High Ambient) option. Emergency egress options for -20°C ambient environments and occupancy sensor available.

Mounting
Gasketed and zinc plated rigid steel mounting attachment fits directly to 4" J-box or wall with the Galleon Wall "Hook-N-Lock" mechanism for quick installation. Secured with two captive corrosion resistant black oxide coated allen head set screws which are concealed but accessible from bottom of fixture.

Finish
Housing finished in super durable TGIC polyester powder coat paint, 2.5 mil nominal thickness for superior protection against fade and wear. Standard colors include black, bronze, grey, white, dark platinum and graphite metallic. RAL and custom color matches available. Consult the McGraw-Edison Architectural Colors brochure for the complete selection.

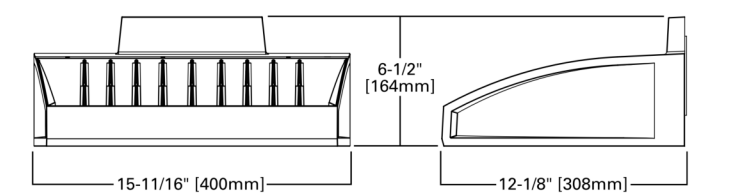
Warranty
Five-year warranty.



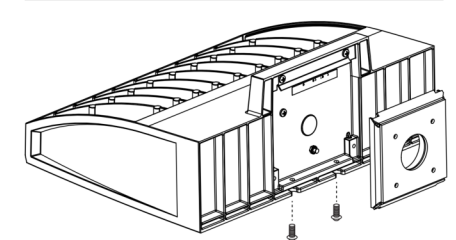
GAW GALLEON WALL

1-2 Light Squares
Solid State LED
WALL MOUNT LUMINAIRE

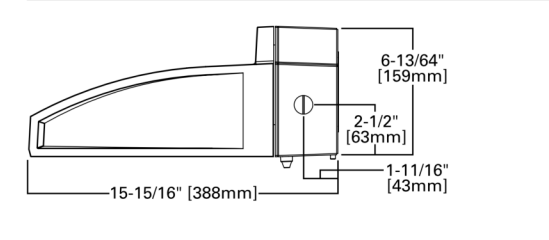
DIMENSIONS



HOOK-N-LOCK MOUNTING



BATTERY BACKUP AND THRU-BRANCH BACK BOX



CERTIFICATION DATA
UL/cUL Listed
LM79/LM80 Compliant
IP66 Housing
3G Vibration Rated
ISO 9001

ENERGY DATA
Electronic LED Driver
≥0.9 Power Factor
≤20% Total Harmonic Distortion
120V/277V 50/60Hz
347V/480V 60Hz
-40°C Min. Temperature
40°C Max. Temperature
50°C Max. Temperature (HA Option)

SHIPPING DATA
Approximate Net Weight:
27 lbs. (12.2 kgs.)

TDS14039EN
June 25, 2020 1:59 PM
*www.designlights.org

1 ES02 FIXTURE TYPE SA
N.T.S.

2 ES02 FIXTURE TYPE SB
N.T.S.

CLIENT LOGO

KEYPLAN

No.	ISSUANCE	DATE
1	ISSUED FOR SPA	2020.10.02

CLIENT
PETAWAWA BIOFUEL

Enter client address here

PROJECT
SOUTHGATE BIOFUEL FACILITY

ECO PARKWAY, DUNDALK, ON

TITLE
LIGHTING FIXTURE CUTSHEETS

WALTERFEDY
KITCHENER HAMILTON 800.685.1378 walterfedy.com

SEAL

REPRODUCTION OR DISTRIBUTION FOR PURPOSES OTHER THAN AUTHORIZED BY WALTERFEDY IS FORBIDDEN. CONTRACTORS SHALL VERIFY AND BE RESPONSIBLE FOR ALL DIMENSIONS AND CONDITIONS ON THE JOB AND REPORT ANY VARIATIONS FROM THE DIMENSIONS AND CONDITIONS SHOWN ON DRAWINGS TO WALTERFEDY. DO NOT SCALE THIS DRAWING.

COPYRIGHT © 2020 Walterfedy Inc.

SCALE:	As Indicated	SHEET NO.:	ES02
DATE:	09/30/20		
PROJECT NO.:	2019-0413-20		
FILE:			
DRAWN BY:	Author		
CHECKED BY:	Checker		